

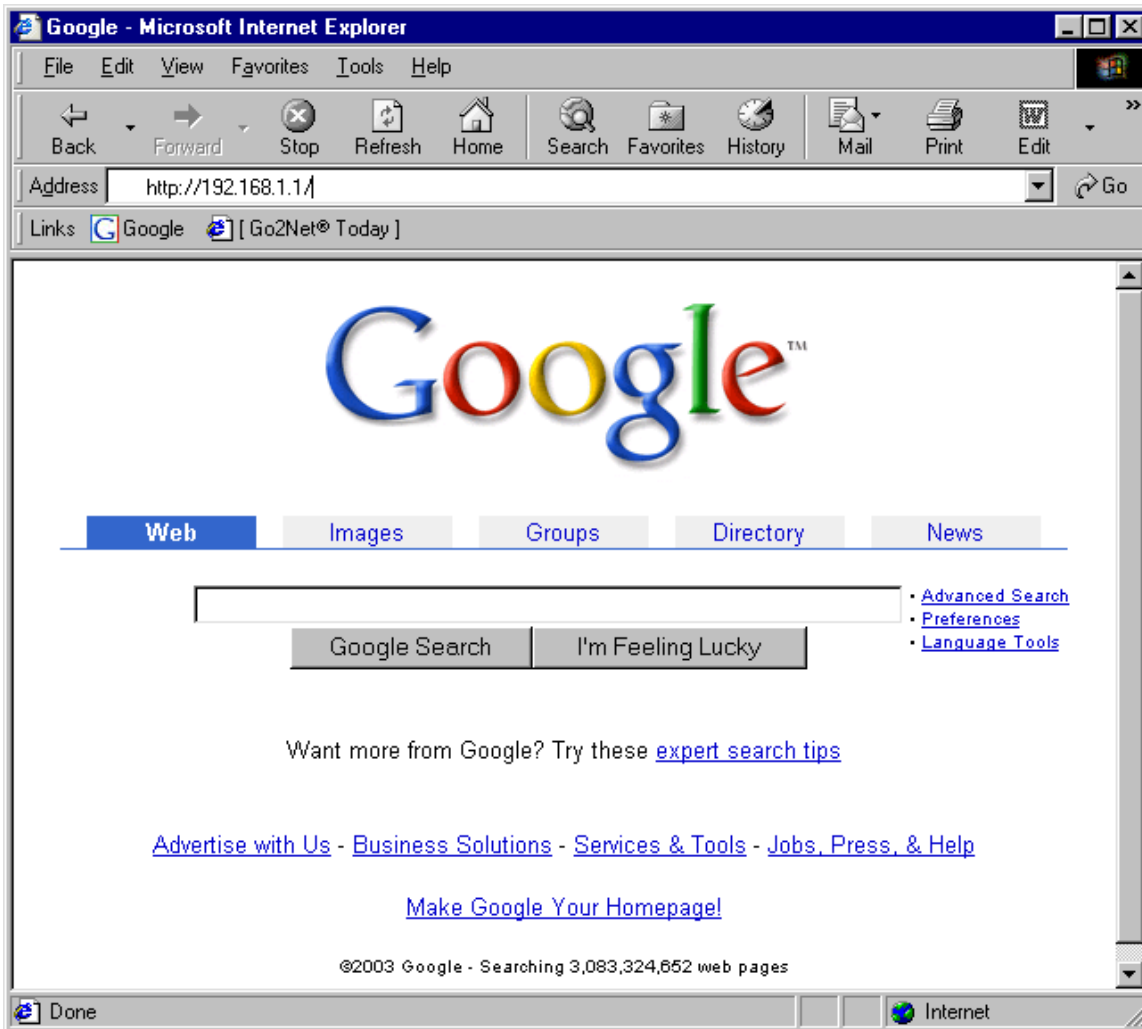
Instructions for Configuring Your Zyxel 643R Router for the Premium ADSL Self-Installation

General information

- a. The Zyxel Prestige ships with certain factory defaults if shipped with ZyNOS F/W Version: **V2.50(IQ.1)**
- b. LAN IP address of 192.168.1.1 and subnet mask of 255.255.255.0 (24 bits).
- c. DHCP server enabled with IP pool addresses starting from 192.168.1.101. This means the Prestige can assign IP addresses to your PCs if you set them to get an IP address automatically.
- d. Default password of **9y8sdn3r4**
- e. You must have ordered the Premium DSL service from AT&T
- f. AT&T must have provisioned the phone line for DSL access
- g. AT&T must have provided you with an IP address and DNS server addresses (see above)
- h. Your PCs must have a 10M or 100M Ethernet adapter card and TCP/IP installed. Connect your PC's Ethernet Adapter to the Prestige's LAN port with a straight Ethernet cable.

Configuring the Router

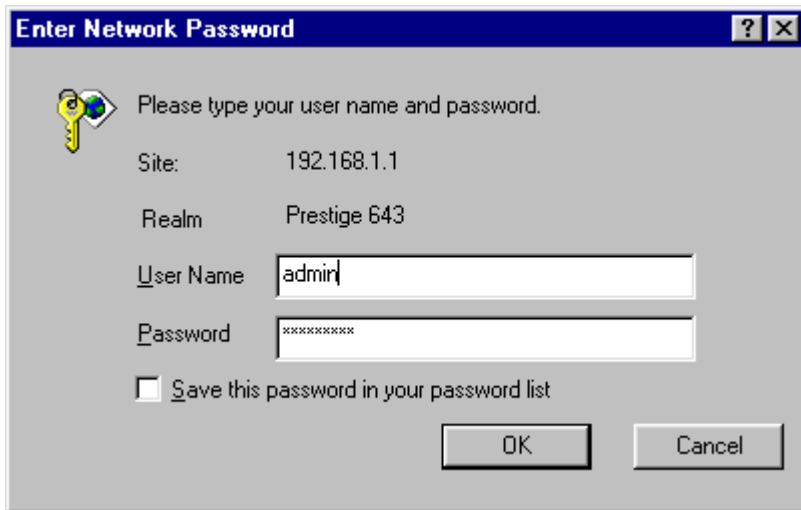
1. Power up the Zyxel Prestige.
2. Under TCP/IP settings for your PC's Ethernet adapter, click on "Obtain an IP address automatically" and lease an IP address from the Zyxel, if not already done so when you configured your PC.
3. Launch your web browser, enter <http://192.168.1.1/> in your browser's address field and hit <ENTER>



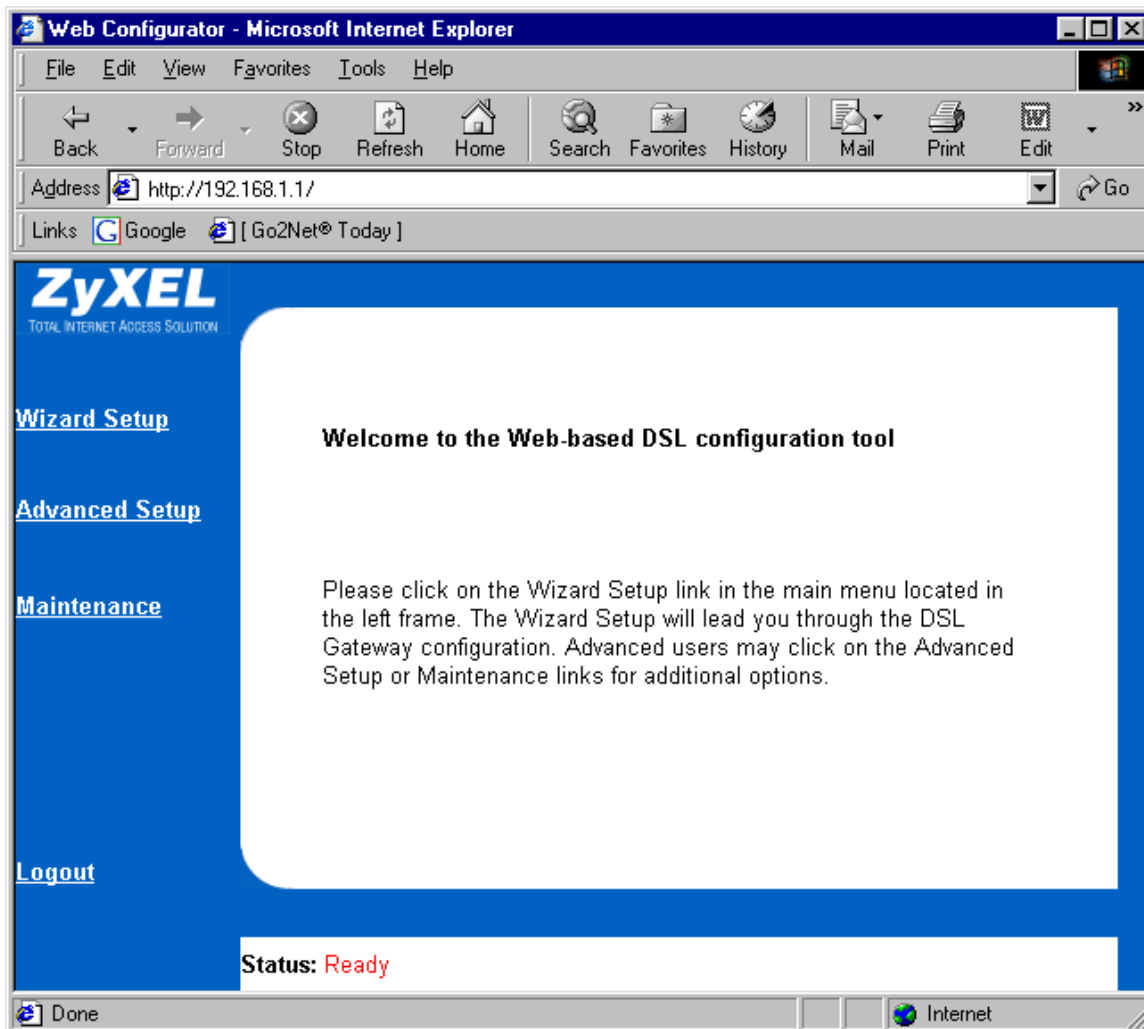
4. You will be prompted for a username and password.



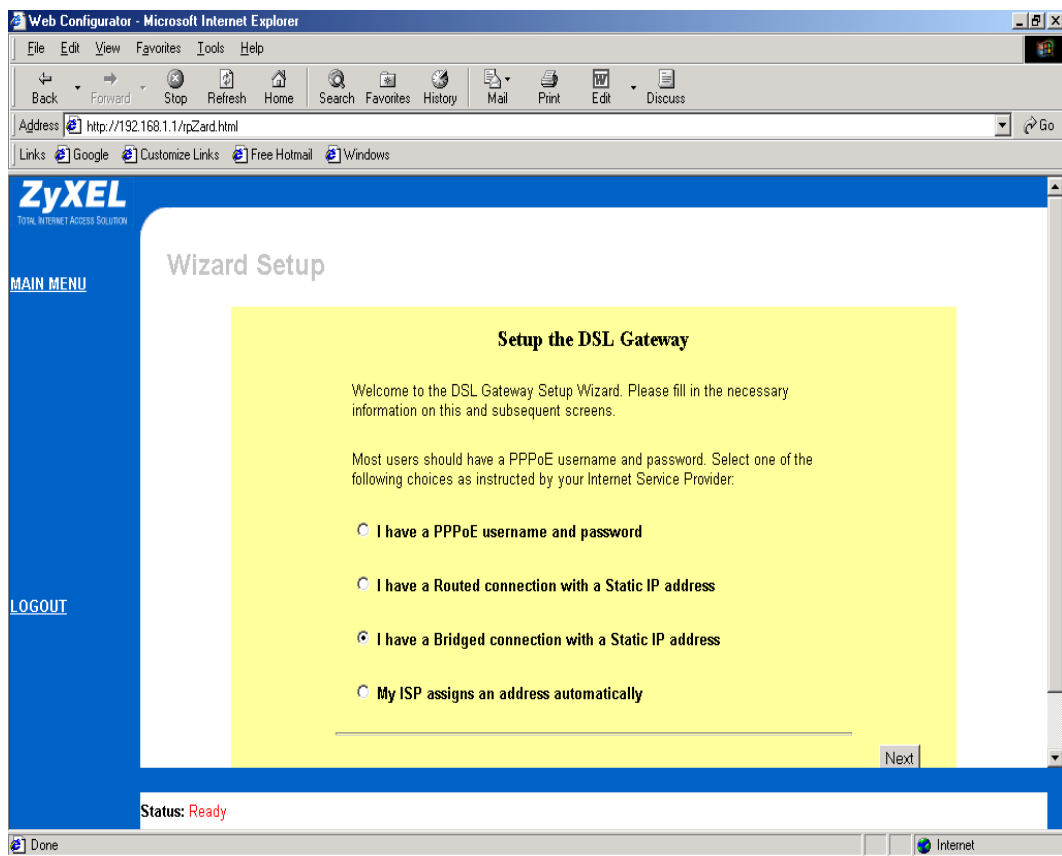
5. Use **admin** as the username and **9y8sdn3r4** as the password.



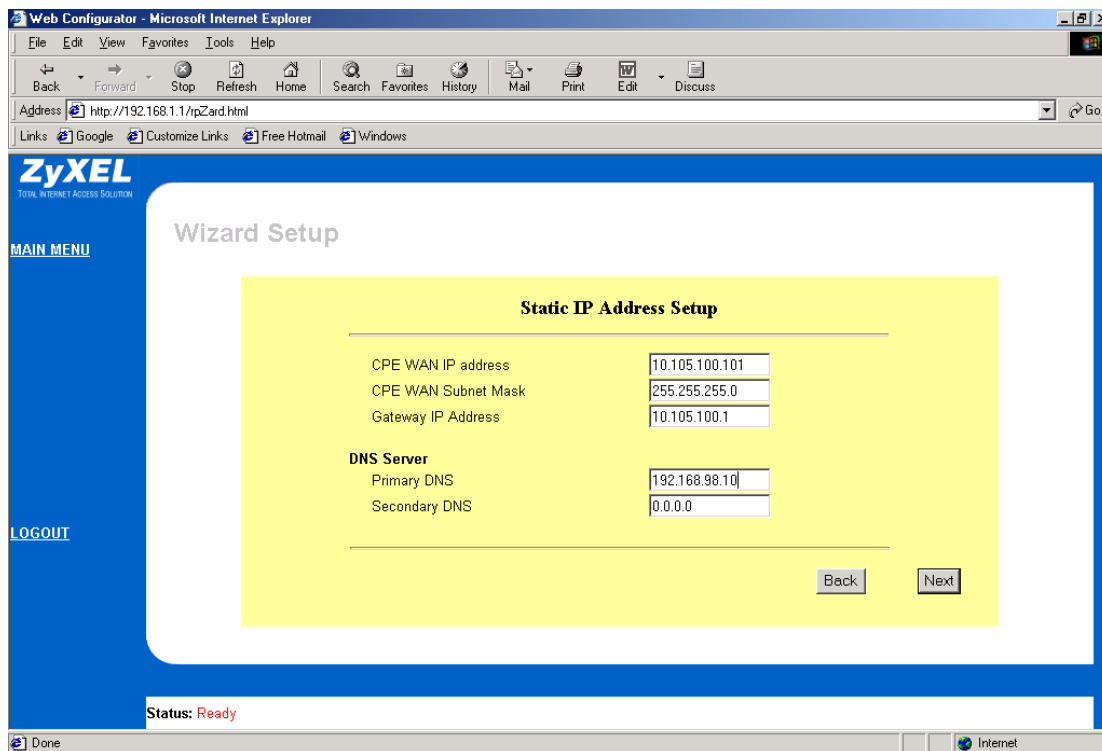
6. It will take you to the main screen of the Web based configuration tool.



7. Click on Wizard Setup link on the left. This will lead you through a user friendly dialog.



8. Check the “I have a bridged connection with a static IP address” option, if not already selected, and hit Next
9. The tool will then ask you for your CPE WAN IP Address, CPE WAN Subnet Mask, Gateway IP Address, and DNS server addresses. Enter this information as provided by AT&T and hit next.



10. Click on "Done" button.

11. The Router setup is now complete. You may close the browser if you wish.

Web Configurator - Microsoft Internet Explorer

File Edit View Favorites Tools Help

Back Forward Stop Refresh Home Search Favorites History Mail Print Edit Discuss AIM

Address <http://192.168.1.1/rpZard.html> Go

Links [Google] [Go2Net® Today]

ZyXEL
TOTAL INTERNET ACCESS SOLUTION

MAIN MENU

LOGOUT

Wizard Setup

DSL Gateway Setup Complete

Your DSL Gateway is now configured. If your ISP has supplied you with Multiple IP Addresses, please click the "Configure IP information" button. Otherwise, if you've connected the DSL Gateway to the network and the "ADSL" light is illuminated green, you should be able to access the Internet after clicking the "Done" button. For further troubleshooting, please refer to the troubleshooting guide packaged with your DSL Gateway.

Do **NOT** click this button if your ISP has **NOT** supplied you with Multiple IP Addresses.

Status: Ready

Done Internet