



## Apple Mac



## Apple Mac Setup

**Welcome to AT&T DSL Internet Service!** This guide is designed to help you configure your Mac to access the Internet quickly and easily using AT&T DSL.

### Before You Begin

First, please make sure that your Mac has an Ethernet Network Interface Card (NIC) or built-in Ethernet port. This is **required** to use the service. If your Mac does not have a NIC, you can purchase one at any Macintosh retailer. Note that all Macs shipped since about 1998, including all iMacs and iBooks, support Ethernet.

Next, check to see which type of service you will be using.

If you have ordered **Single-User Service** with DHCP and you have a fairly new Macintosh, particularly one with Ethernet built in, you may be able to connect to the service without any configuration at all. Simply connect your computer's Ethernet port to the DSL modem with a standard Ethernet cable and restart; you should be able to access the Internet immediately. If you are unable to access the Internet in this way, please follow the directions below to set up TCP/IP support on your Mac.

If you have ordered **Multi-User Service** or **Single-User Service with Static IP**, you will need to configure your Mac with static IP addresses. Please follow the instructions below.

### How to configure TCP/IP network on Apple Mac:

1. On the main screen click on an Apple icon as shown in figure 1.

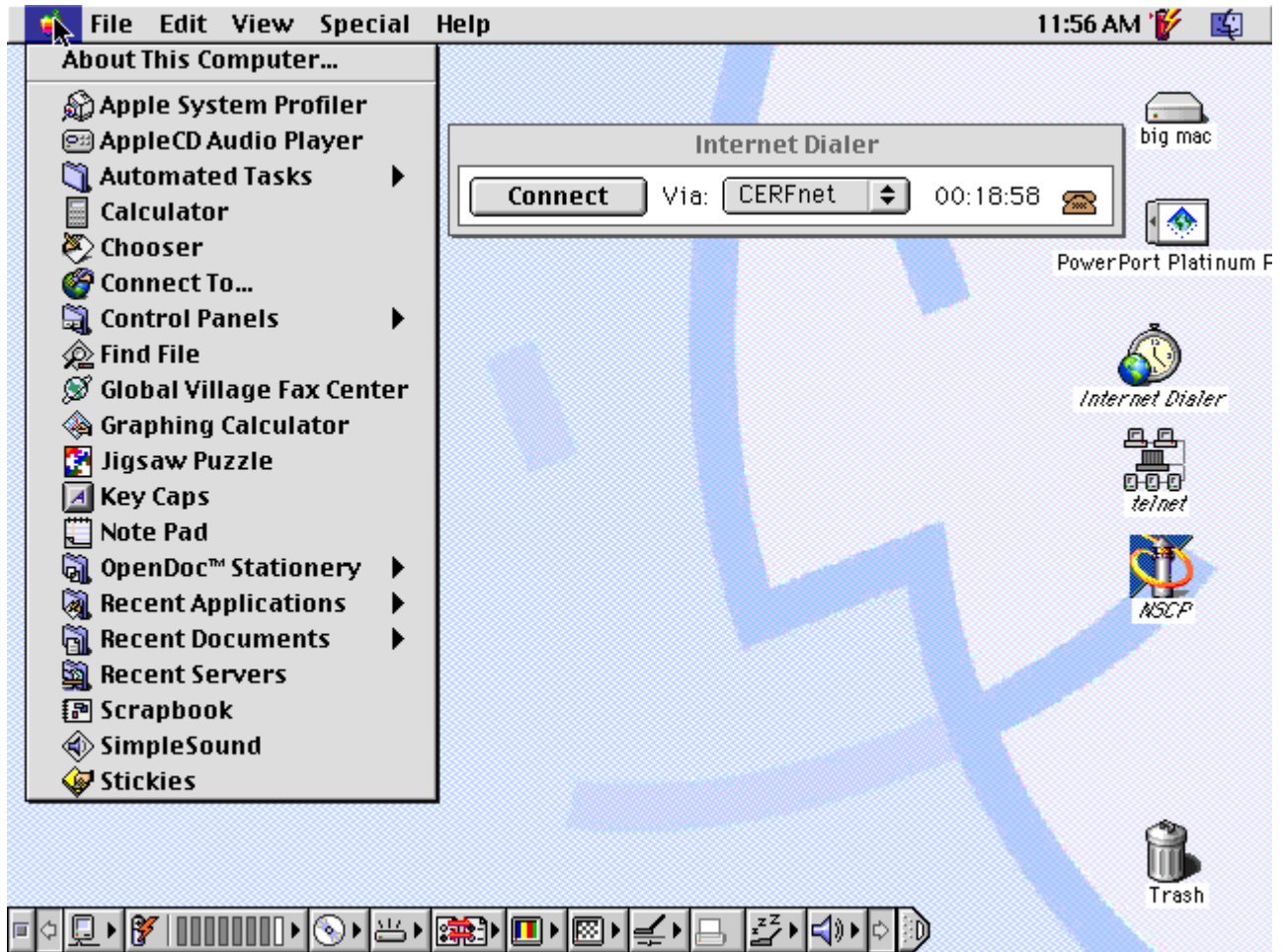


Figure 1 – How to access the Control Panel

2. Select Control Panels, and then select TCP/IP on the Control Panels menu as shown in figure 2.

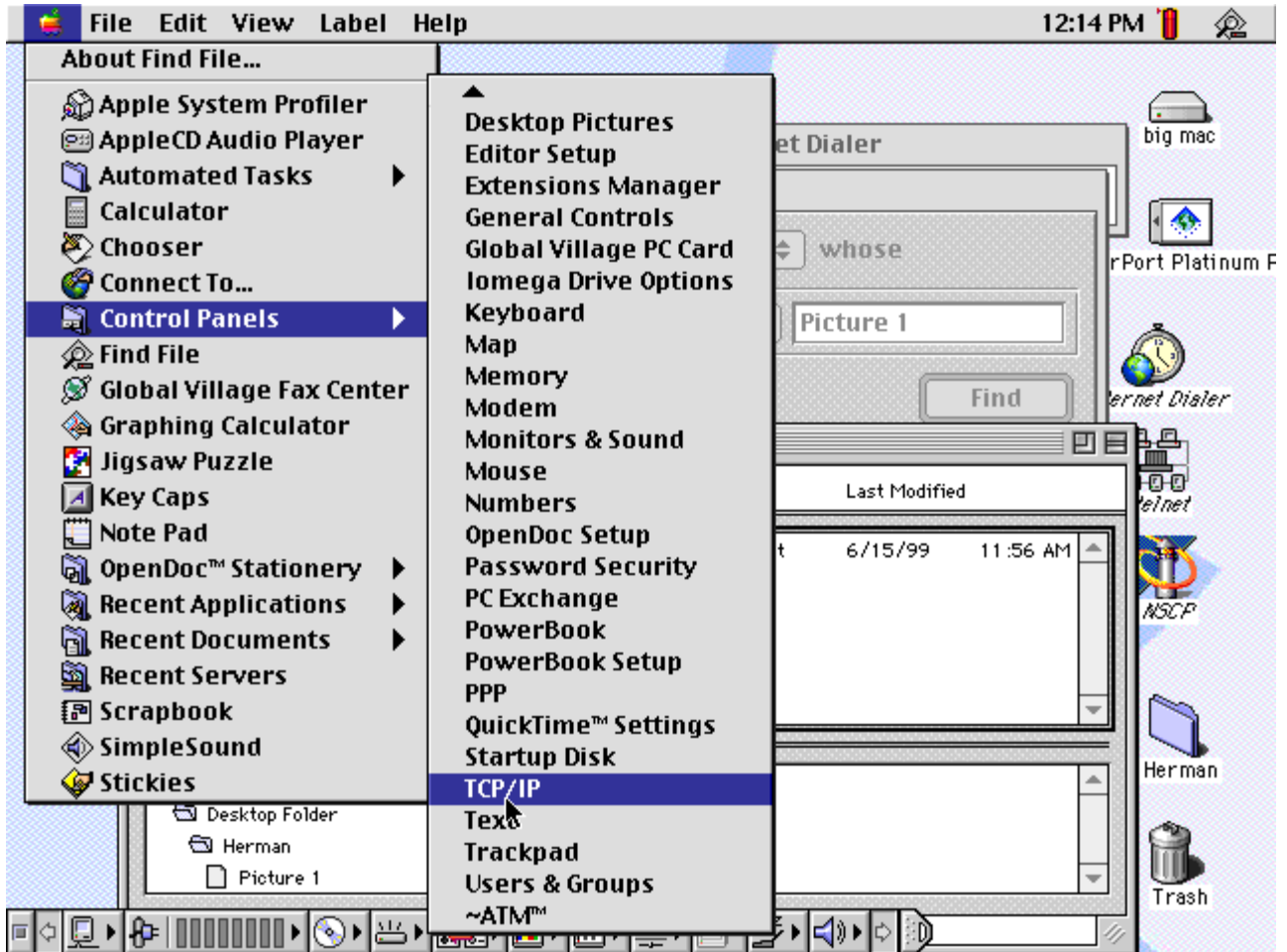


Figure 2 – TCP/IP Network Icon

3. TCP/IP network dialog box will be shown as in figure 3.

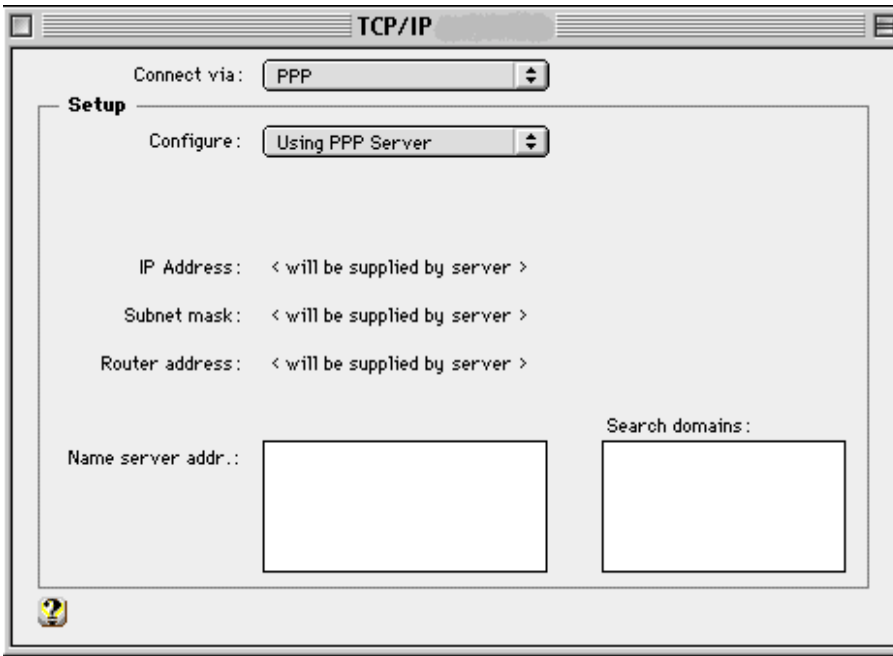


Figure 3 – TCP/IP Network Dialog Box

4. Click on the up and down arrow key at the "Connect Via" prompt to select "Alternate Ethernet." *If you are using our Single-user service with DHCP, select "From DHCP Server" from the "Configure" drop-down menu. If you are using our Multi-user service or Single-user service with Static IP, select "Manually" from the "Configure" drop-down menu.*

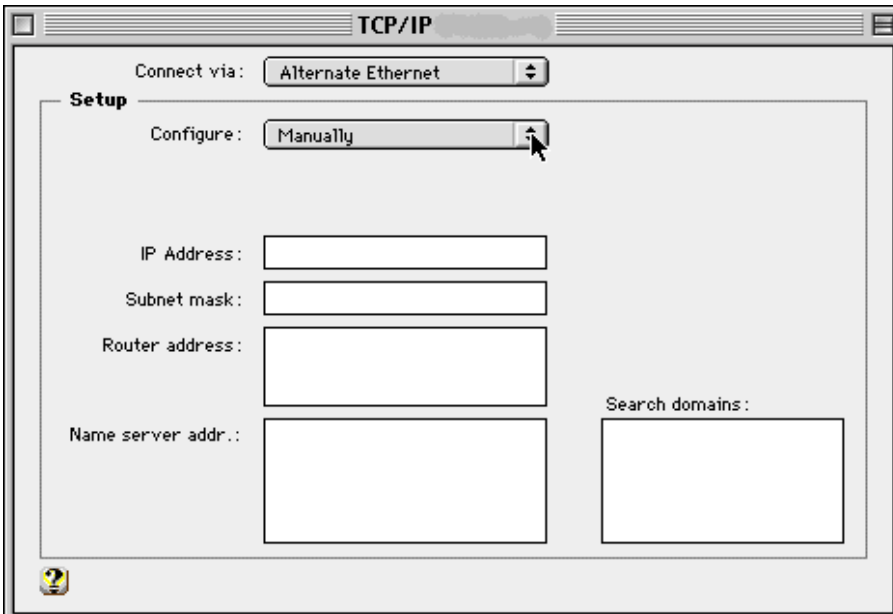


Figure 4 – Network Medium Choice

5. If you are using our Multi-user service or Single-User with Static IP, fill in the fields "IP Address", "Subnet mask", and "Router address" with the values provided by AT&T.

Fill in the "Name server addr." field with the Domain Name Servers (DNS) addresses. If you are not running your own DNS, and are using your DSL connection for Internet access, AT&T provides 2 DNS servers that you can use.

You should add both DNS servers into your computer's configuration, putting the DNS server that is geographically closest to you first followed by the second server (to provide you with a backup in case the first server is unavailable). Putting the servers in this order will give you the best performance.

If your location is in the eastern half of the US, list the servers in this order:

12.127.16.83  
12.127.17.83

If your location is in the western half of the US, list the servers in this order:

12.127.17.83  
12.127.16.83

If you're running a DNS on one of your own computers, you should use the IP address of that computer. Since this computer is in your own location, it will give you the best possible performance.

Under the "Search domains:" prompt enter **att.com**.

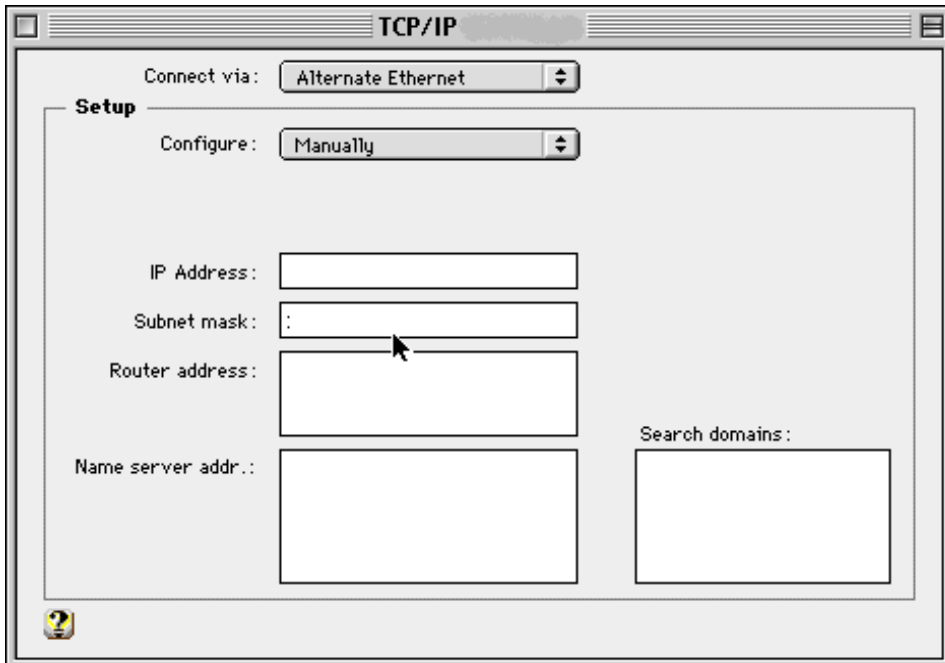


Figure 5 – TCP/IP Dialog Box with network information

6. Click on “File” and select “Close” to accept the new configuration.
7. Save the configuration by clicking the on “Save” button as shown on figure 6.

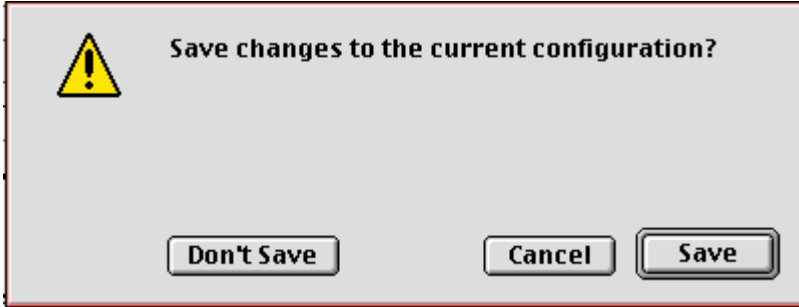


Figure 6 – Saving Configuration Dialog.