

CONFIGURATION GUIDE (FOR PCs RUNNING UNDER WINDOWS^{XP})

ENTER YOUR NETWORK SETTING AS DESCRIBED HERE.

Find the network setting sent to you from your Internet Service Provider (ISP). You should have received this by mail or email already.

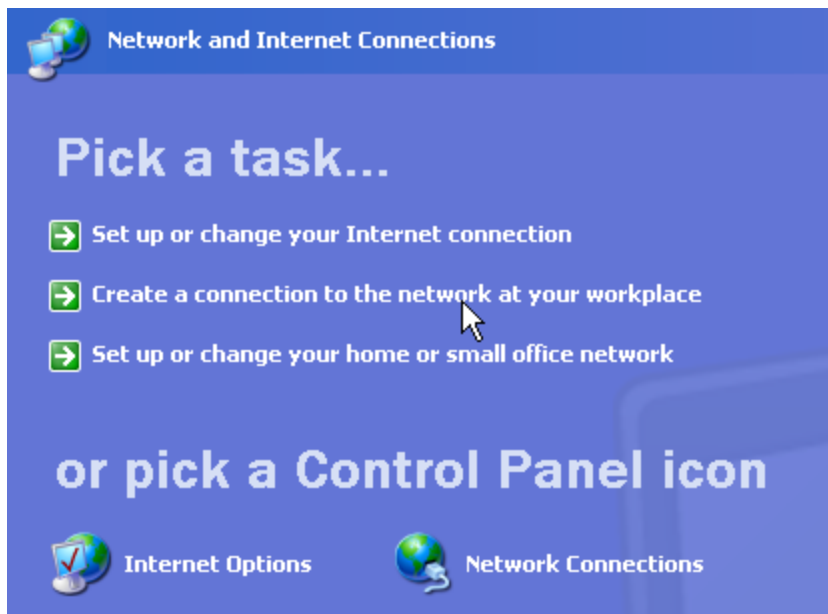
On your computer, go to:



Open the network window by clicking on



The following window will appear:



Click on



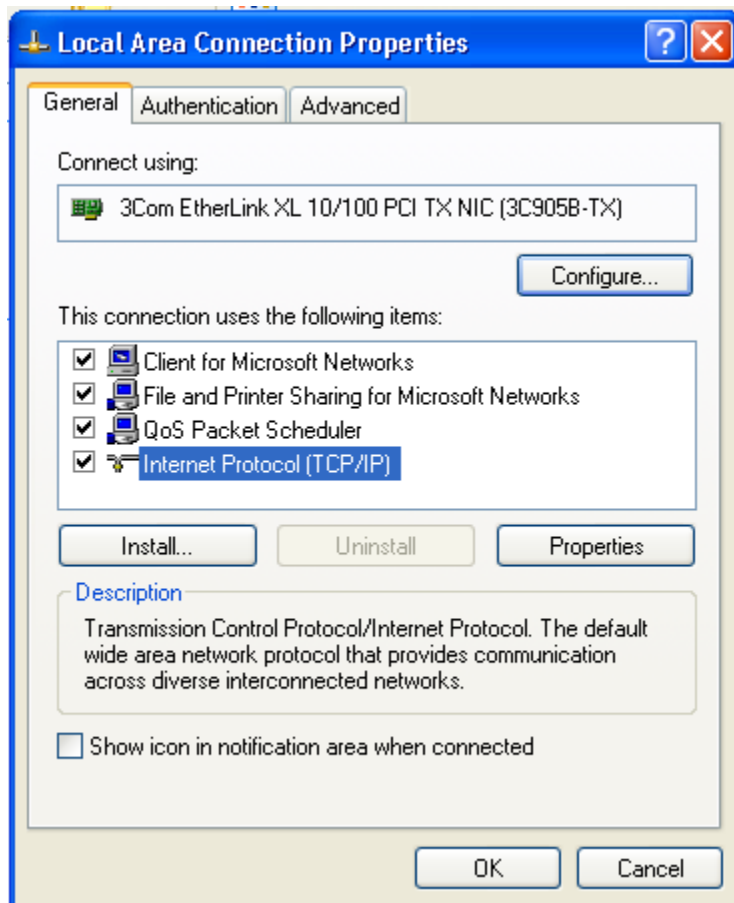
CONFIGURATION GUIDE (FOR PCs RUNNING UNDER WINDOWS^{XP})

Then double click on



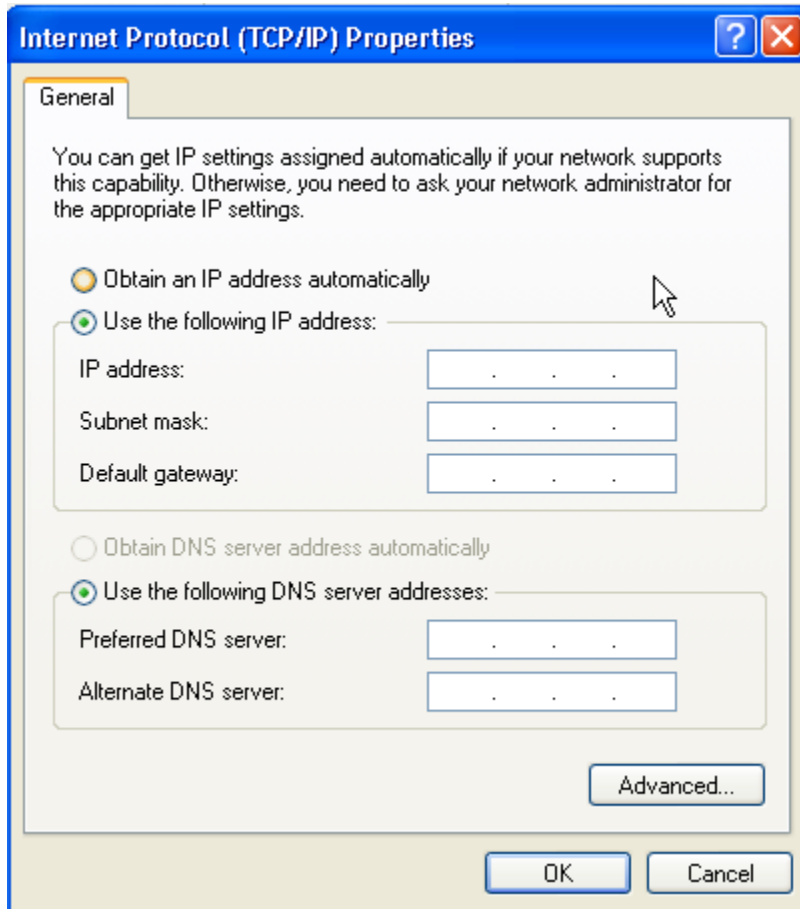
NOTE: The description under this icon may look slightly different on your computer

In the list of network components, click the entry that says “Internet Protocol (TCP/IP)”



Click:  to bring up the “Internet Protocol (TCP/IP) Properties” window

CONFIGURATION GUIDE (FOR PCs RUNNING UNDER WINDOWS^{XP})



❖ IF YOUR ISP HAS GIVEN YOU A STATIC IP ADDRESS...

In TCP/IP Properties select: Use the following IP address:

- Enter your IP Address:
- Enter your Subnet Mask:
- Enter your Default Gateway:

Select: Use the following DNS server addresses:

CONFIGURATION GUIDE

(FOR PCs RUNNING UNDER WINDOWS^{XP})

- Enter your DNS Server:
- If you have a second DNS Server, enter it as well:

In the **Internet Protocol (TCP/IP) Properties** window click 

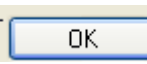
Continue **TURNING OFF DIAL UP**.

❖ IF YOUR ISP HASN'T GIVEN YOU A STATIC IP ADDRESS...

In the **Internet Protocol (TCP/IP) Properties** click

Select: Obtain an IP address automatically

Click 

In the **Internet Protocol (TCP/IP) Properties** window click 

In the **Local Area Connection Properties** window click 

Continue **TURNING OFF DIAL UP**.

❖ TURNING OFF DIAL UP

On your computer, go to:



Open the network window by clicking on

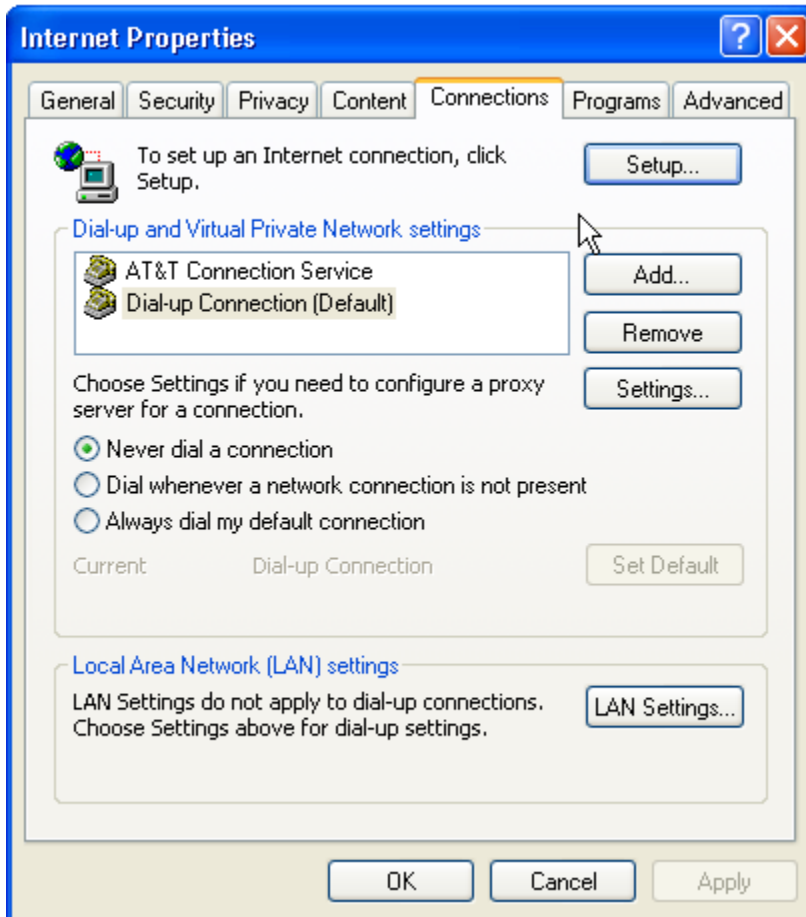


CONFIGURATION GUIDE (FOR PCs RUNNING UNDER WINDOWS^{XP})

Then on



Click on the "Connections: tab



Select: Never dial a connection

Click A rectangular button with the text "OK" inside.

Restart your computer.

Congratulations, you have completed your DSL installation! You may now use your browser to surf the net.